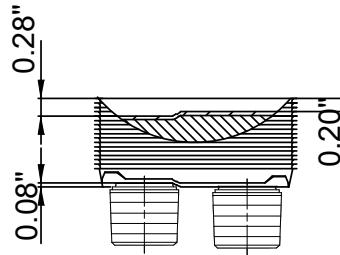
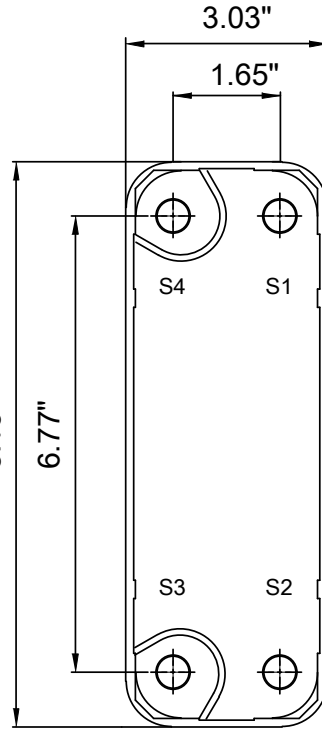
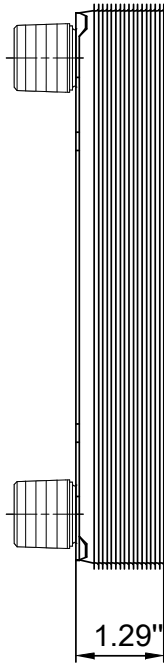
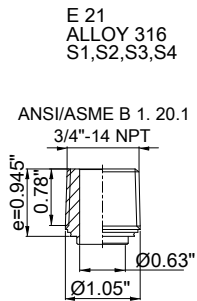


Note that all unique customer requirements (i.e tolerance) need to be verified thru Alfa Laval.



Frameplate is depressed 0.08 inches at connection S3/S4  
 Pressureplate is depressed 0.08 inches / even number of channel plates  
 at connections T3/T4 / uneven number of channel plates at  
 connections T1/T2.

HEATING SURFACE                   ft<sup>2</sup>  
 NETWEIGHT                           2.6 lb  
 OPERATING WEIGHT               lb  
 PLATE MATERIAL                   ALLOY 316  
 PLATE GROUPING                   1\*4H/1\*5H

ALL DIMENSIONS IN INCHES

| SIDE | MEDIA | INLET | TEMP. | OUTLET | TEMP. | FLOW RATE | PRESSURE DROP | LIQUID VOL.         |
|------|-------|-------|-------|--------|-------|-----------|---------------|---------------------|
| 1    | Water | S1    | °F    | S2     | °F    | lb/h      | psi           | 0.0 ft <sup>3</sup> |
| 2    | Water | S3    | °F    | S4     | °F    | lb/h      | psi           | 0.0 ft <sup>3</sup> |

PRESSURE VESSEL APPROVAL

PED/CRN

AlfaNova 14-10H (3287050860)

www.alfalaval.com

CUSTOMER NAME / REF. NO.

COMPANY / REF.  
 Alfa Laval Nordic AB  
 Alfa Laval Inc.

TOTAL LENGTH                   2.2 in  
 TOTAL WIDTH                    3.0 in  
 TOTAL HEIGHT                   8.1 in

8/25/2021  
 REV 0